

ASTER L1T User Advisory – September 8, 2016

Users of ASTER TIR night data be advised that some data may exhibit scans filled with zero values in the ASTER L1T product. This condition was introduced into the data by L1T processing where certain conditions create scan offsets which are not handled properly by the L1T code. The problem has only been seen in low latitudes ascending orbit (night) data for all time periods. Higher level products avoid this scan zero fill condition because the processing does not use the L1T product as an input. A code modification is currently in development which eliminates the zero fill condition. Further investigation is in work to determine the scope of the change and a future news announcement will detail the change to the L1T product and a strategy for implementation.

Example: ASTER TIR Night Data, Goma Africa, 22 February, 2007

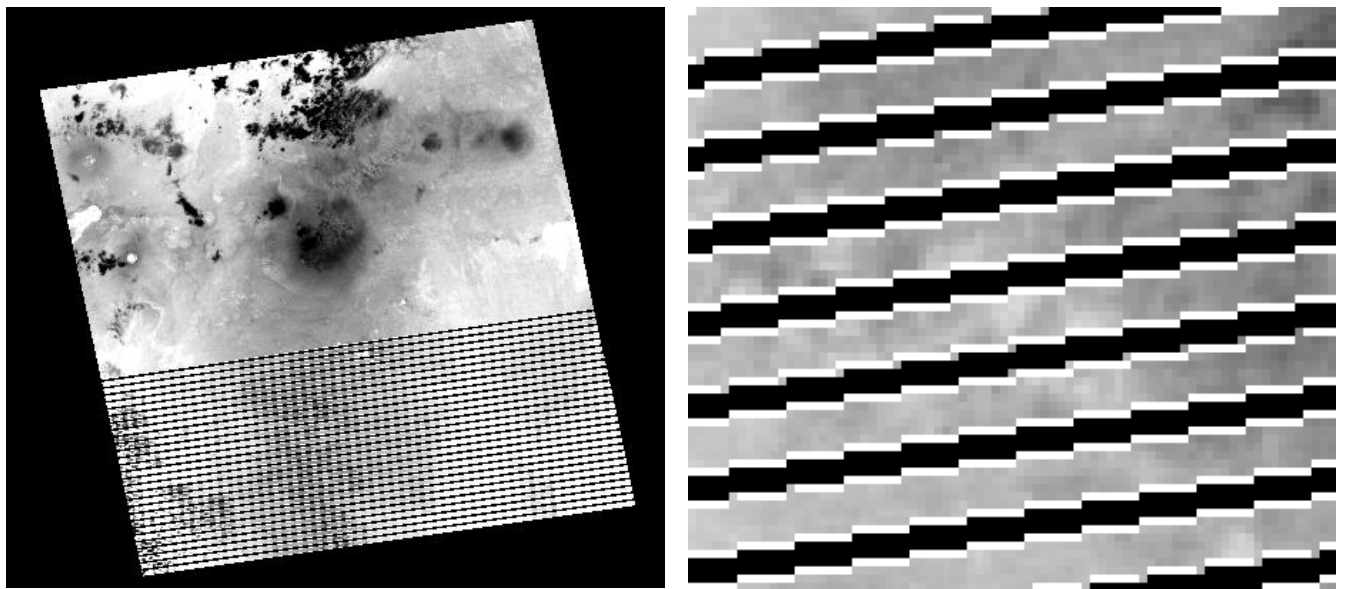


Figure 1. Example of TIR night data scan zero fill in Goma Africa browse image (AST_L1T_00302222007203410_20150518093829_28775) TIR full browse and a cropped zoom image