

DATA & APPLICATIONS ONLINE

Application for Extracting and Exploring Analysis Ready Samples (AppEEARS)

Overview

The Application for Extracting and Exploring Analysis Ready Samples (AppEEARS) offers a simple and efficient way to access and transform geospatial data from a variety of federal data archives. AppEEARS enables users to subset geospatial datasets using spatial, temporal, and band/layer parameters. Two types of sample requests are available: point (geographic coordinate pairs) and area (vector polygons). AppEEARS sample requests provide users not only with data values, but also with associated data quality information and interactive visualizations to explore the data prior to download.

AppEEARS is a collaborative effort between several NASA Distributed Active Archive Centers (DAACs) and USGS federal archives; it is hosted by NASA's Land Processes (LP) DAAC.

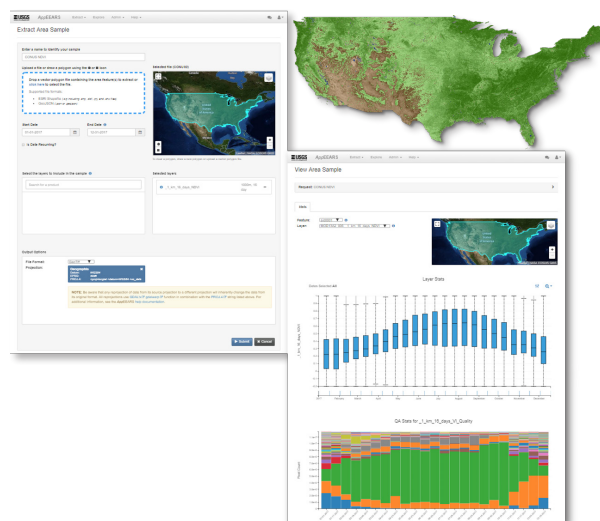
Key Features

- Access nearly 100 geospatial data products, such as elevation, land use, vegetation, population, and more — most with global coverage
- Process and download less data by requesting subsets based on user-defined parameters
- Input your own latitude/longitude coordinate pairs or select point locations from a map to retrieve data for specific point locations
- Upload a polygon shapefile or a geoJSON with multiple features, or draw your own polygon on a map to retrieve mosaicked data across geographic areas
- Transform data from native format (e.g. HDF) to GeoTIFF or NetCDF and from native projection to a selection of common projections
- Explore your request sample within the application, using several different graphing and charting options
- Easily access data quality descriptions for each pixel

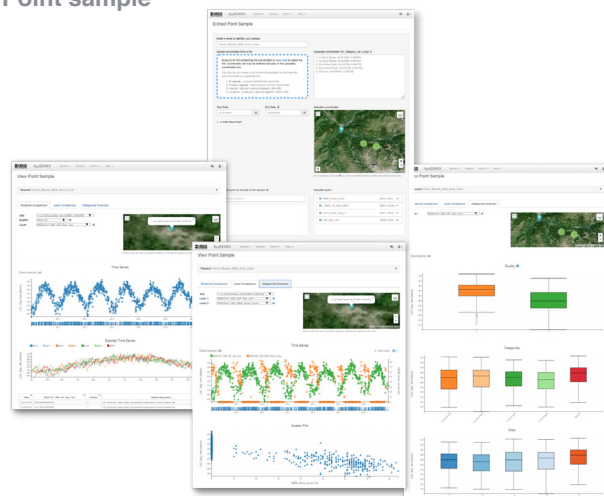
Access

- To access AppEEARS, go to: <https://lpdaacsvc.cr.usgs.gov/appeears/>
- A NASA Earthdata login is required to use AppEEARS: <https://urs.earthdata.nasa.gov/>
- Want help getting started? Check out the documentation: <https://lpdaacsvc.cr.usgs.gov/appeears/help>

Area sample



Point sample



Application for Extracting and Exploring Analysis Ready Samples (AppEEARS)
<https://lpdaacsvc.cr.usgs.gov/appeears/>



EOSDIS
 NASA's Earth Observing System Data and Information System (EOSDIS) provides end-to-end capabilities for managing NASA's Earth science data as part of NASA's Earth Science Data Systems Program.

To learn more about NASA EOSDIS data, information, services, and tools, go to earthdata.nasa.gov.