



# **ECOSystem Spaceborne Thermal Radiometer Experiment on Space Station (ECOSTRESS)**



## **ECOSTRESS Level-4 DisALEXI-JPL Evaporative Stress Index (ECO4ESIALEXI) Algorithm Theoretical Basis Document**

Version 1  
May 20, 2021

Kerry Cawse-Nicholson  
ECOSTRESS Science Team  
Jet Propulsion Laboratory  
California Institute of Technology

Martha Anderson  
ECOSTRESS Algorithm Development Team  
ECOSTRESS Science Team  
U.S. Department of Agriculture  
Agricultural Research Service

*© 2021 California Institute of Technology. Government sponsorship acknowledged.*

National Aeronautics and  
Space Administration



---

Jet Propulsion Laboratory  
4800 Oak Grove Drive  
Pasadena, California 91109-8099  
California Institute of Technology

---

This research was carried out at the Jet Propulsion Laboratory, California Institute of Technology, under a contract with the National Aeronautics and Space Administration.

Reference herein to any specific commercial product, process, or service by trade name, trademark, manufacturer, or otherwise, does not constitute or imply its endorsement by the United States Government or the Jet Propulsion Laboratory, California Institute of Technology.

© 2021. California Institute of Technology. Government sponsorship acknowledged.

Note:

The users' guide is designed to be a living document that describes the ECOSTRESS DisALEXI-JPL evaporative stress index (ESI) product. The document describes the current state of the art, and is revised as progress is made in the development and assessment of the ESI product. The primary purpose of the document is to present an overview of the ECOSTRESS L4 DisALEXI-JPL data product to the potential user. For more detailed information on the physical basis and algorithm details please see the Algorithm Theoretical Basis Document (ATBD).

---

## Change History Log

<b>Revision</b>	<b>Effective Date</b>	<b>Prepared by</b>	<b>Description of Changes</b>
Draft	5/5/2021	Kerry Cawse-Nicholson	User Guide first draft

---

## Contacts

Readers seeking additional information about this product may contact the following:

- Kerry Cawse-Nicholson  
MS 183-501  
Jet Propulsion Laboratory  
4800 Oak Grove Dr.  
Pasadena, CA 91109  
Email: [Kerry-anne.cawse-nicholson@jpl.nasa.gov](mailto:Kerry-anne.cawse-nicholson@jpl.nasa.gov)  
Office: (818) 354-1594
- Martha C. Anderson  
Hydrology and Remote Sensing Laboratory  
USDA - ARS  
103000 Baltimore Ave  
Beltsville, MD 20705  
Email: [martha.anderson@ars.usda.gov](mailto:martha.anderson@ars.usda.gov)  
Office: (301) 504-6616
- Simon J. Hook  
MS 183-501  
Jet Propulsion Laboratory  
4800 Oak Grove Dr.  
Pasadena, CA 91109  
Email: [simon.j.hook@jpl.nasa.gov](mailto:simon.j.hook@jpl.nasa.gov)  
Office: (818) 354-0974  
Fax: (818) 354-5148

---

## Contents

<b>Figures</b> .....	<b>7</b>
<b>Tables</b> .....	<b>7</b>
<b>1 Introduction</b> .....	<b>8</b>
1.1 File format for L4 products .....	8
1.2 DisALEXI-JPL ET Product .....	9
1.3 Product Availability .....	9
<b>2 ECOSTRESS_L4_ET Product</b> .....	<b>9</b>
2.1 Algorithm Description .....	9
2.2 Scientific Data Sets (SDS) .....	13
2.3 Attributes.....	13
2.4 Quality Flag .....	15
<b>3 References</b> .....	<b>16</b>

---

## Figures

Figure 1. Example ECOSTRESS L2 Land Surface Temperature (LST) scene over the southwestern USA generated from simulated data.....	11
Figure 2. Schematic detailing the flow of the ECOSTRESS LST PGE within the JPL Science Data System.....	12

## Tables

Table 1: Summary of the ECOSTRESS LST&E product.....	9
Table 2: ECOSTRESS input products and ancillary data required to produce the L2 LST&E product. ....	12
Table 3. The Scientific Data Sets (SDS) in the ECOSTRESS L2 product. ....	13
Table 4. Standard product metadata included in all ECOSTRESS products. ....	13
Table 5. Product specific metadata for the ECOSTRESS L2 product. ....	14
Table 6. Bit flags defined in the QC SDS in the MxD21_L2 product. (Note: Bit 0 is the least significant bit). ....	15
Table 7. The SDSs in the ECOSTRESS L2 Cloud product. .....	<b>Er</b>
<b>ror! Bookmark not defined.</b>	
Table 8. The metadata definition in the ECOSTRESS L2 Cloud product. .....	<b>Er</b>
<b>ror! Bookmark not defined.</b>	

---

## 1 Introduction

This is the user guide for the ECOSTRESS Level-4 DisALEXI-JPL (evaporative stress index (ESI) product. The L4 product uses a physics-based surface energy balance (SEB) algorithm to retrieve estimates of daily ET using the ECOSTRESS L-2 land-surface temperature and emissivity (LST&E) products, along with ancillary meteorological data and remotely sensed vegetation cover information. is generated in an HDF5 format consistent with ECOSTRESS L-2 products. A future implementation will include data projected onto a 70 m grid. The algorithm is based on spatial disaggregation of regional-scale fluxes from the Atmosphere Land Exchange Inverse (ALEXI) SEB model, and this is an extension of the DisALEXI-USDA product that is available over selected sites at 30 m resolution.

The Evaporative Stress Index (ESI) is computed from clear-sky estimates of the relative ET fraction,  $ESI = ET/ET_o$ , where ET is the ECOSTRESS Level-3 product and  $ET_o$  is the reference ET. Normalizing by reference ET serves to reduce impact of drivers of the evaporative flux that are less directly related to soil moisture limitations (e.g., insolation load and atmospheric demand).

The algorithms and data content of the ESI product are briefly described in this guide, with the purpose of providing a user with sufficient information about the content and structure of the data files to enable the user to access and use the data, in addition to understanding the uncertainties involved with the product and how to interpret the mask information. Overviews of the file formats and provided first followed by descriptions of the algorithm and product contents including all metadata. Publications and documents related to the ECOSTRESS ESI products are listed in the final section.

A description of the major components of the ECOSTRESS algorithm implemented in version 1 of the DisALEXI-JPL ESI code provided in the ATBD available at <https://ecostress.jpl.nasa.gov/products>.

### 1.1 File format for L4 products

The ECOSTRESS ESI products are distributed in HDF5 format and can be read in by HDF5 software. Information on Hierarchical Data Format 5 (HDF5) may be found at <https://www.hdfgroup.org/HDF5/>. The HDF format was developed by NCSA, and has been widely used in the scientific domain. HDF5 can store two primary types of objects: datasets and groups. A dataset is essentially a multidimensional array of data elements, and a group is a structure for organizing objects in an HDF5 file. HDF5 was designed to address some of the limitations of the HDF4. Using these two basic objects, one can create and store almost any kind of scientific data structure, such as images, arrays of vectors, and structured and unstructured grids. They can be mixed and matched in HDF5 files according to user needs. HDF5 does not limit the size of files or the size or number of objects in a file. The scientific data results are delivered as SDSs with local attributes including summary statistics and other information about the data. More detailed information on HDF5 data types may be found in the L4 Product Specification Document (PSD) available at <https://ecostress.jpl.nasa.gov/products>.

The ECOSTRESS ESI data product files contain one set of Attributes (metadata) describing information relevant to production, archiving, user services, input products, geolocation and



analysis of data, as well as provenance and Digital Object Identifier (DOI) of the product attached to the root group (the file). The attributes listed in Table 4 are not described further in this user guide.

## 1.2 DisALEXI-JPL ESI Product

The ECOSTRESS DisALEXI-JPL ET data product is produced for ECOSTRESS overpass dates in swath format, yielding estimates of daily integrated ESI for pixels that were flagged as clear-sky in the input L2 LST&E product. The JPL product is generated CONUS-wide. Table 1 shows a summary of the L3 product characteristics.

Other data product levels briefly described: Level 1B (L1B) is a swath (scene) of measured radiance data geolocated to latitude and longitude centers of 70m resolution pixels. A Level 2 (L2) product is a geophysical product retrieved from the L1B data that remains in latitude and longitude orientation; it has not been temporally or spatially manipulated. The Level 3 and 4 (L3, L4) ECOSTRESS products consist of higher level geophysical variables output from models (evapotranspiration, evaporative stress index, water use efficiency) derived from the L2 and other ancillary data.

Table 1: Summary of the ECOSTRESS DisALEXI-JPL ESI product.

Earth Science Data Type (ESDT)	Product Level	Data Dimension	Spatial Resolution	Temporal Resolution	Map Projection
ECOSTRESS_L4_ESI (USDA)	L4	Approximately 3000 lines by 3000 samples	30 m	gridded	UTM
ECOSTRESS_L4_ESI (JPL)	L4	5400 x 5632	~70 m	swath	Geographic

## 1.3 Product Availability

The ECOSTRESS L4 product will be made available at the NASA Land Processes Distribution Active Archive Center (LPDAAC), <https://earthdata.nasa.gov/> and can be accessed via the Earthdata search engine (initially only available to early adopters; for access see <https://ecostress.jpl.nasa.gov/applications>).

# 2 ECOSTRESS\_L4\_ESI Product

## 2.1 Algorithm Description

The basic processing steps involved in L3 ET product generation are outlined schematically in Fig. 2 - for a full detailed description of the DisALEXI-JPL processing scheme please see the ATBD at <https://ecostress.jpl.nasa.gov/products>. The energy balance model employed here is a multi-scale system designed to generate self-consistent flux assessments from field to regional/continental scales (Anderson, 2003). The regional Atmosphere-Land Exchange Inverse

---

(ALEXI) model relates time-differential LST observations from geostationary satellites to the time-integrated energy balance within the surface-atmospheric boundary layer system (Anderson et al., 1997, 2007a). ALEXI has minimal reliance on absolute (instantaneous) air or surface temperature input data, and therefore provides a relatively robust flux determination at the coarse geostationary pixel scale. For finer scale ET applications, ALEXI flux fields can be spatially disaggregated using higher resolution LST information from ECOSTRESS, polar orbiting systems (e.g., Landsat or MODIS), or from aircraft using an algorithm referred to as DisALEXI-JPL (Norman et al., 2003; Anderson et al., 2004; Cammalleri et al., 2013, 2014; Anderson et al., 2018). Both ALEXI and DisALEXI-JPL use the two-source energy balance (TSEB; Norman, 1995; Kustas, 1999) land-surface representation to partition surface fluxes between the canopy and the soil.

The Evaporative Stress Index (ESI), representing standardized anomalies in ET derived via energy balance, was developed as a remote sensing indicator of agricultural drought and vegetation stress (Anderson et al. 2007b). Regional ESI products (3-10 km resolution) generated with LST retrievals from geostationary (GEO) satellites have demonstrated good correspondence with standard drought indicators (Anderson et al. 2011; 2013), but with advantages in timely detection of drought impacts on agroecosystems as they develop on the ground (Anderson et al. 2015; 2016b; 2016a). The coarse resolution afforded by GEO platforms, however, results in mixed pixels, combining stress signals from multiple land-cover types and land/water-management strategies.

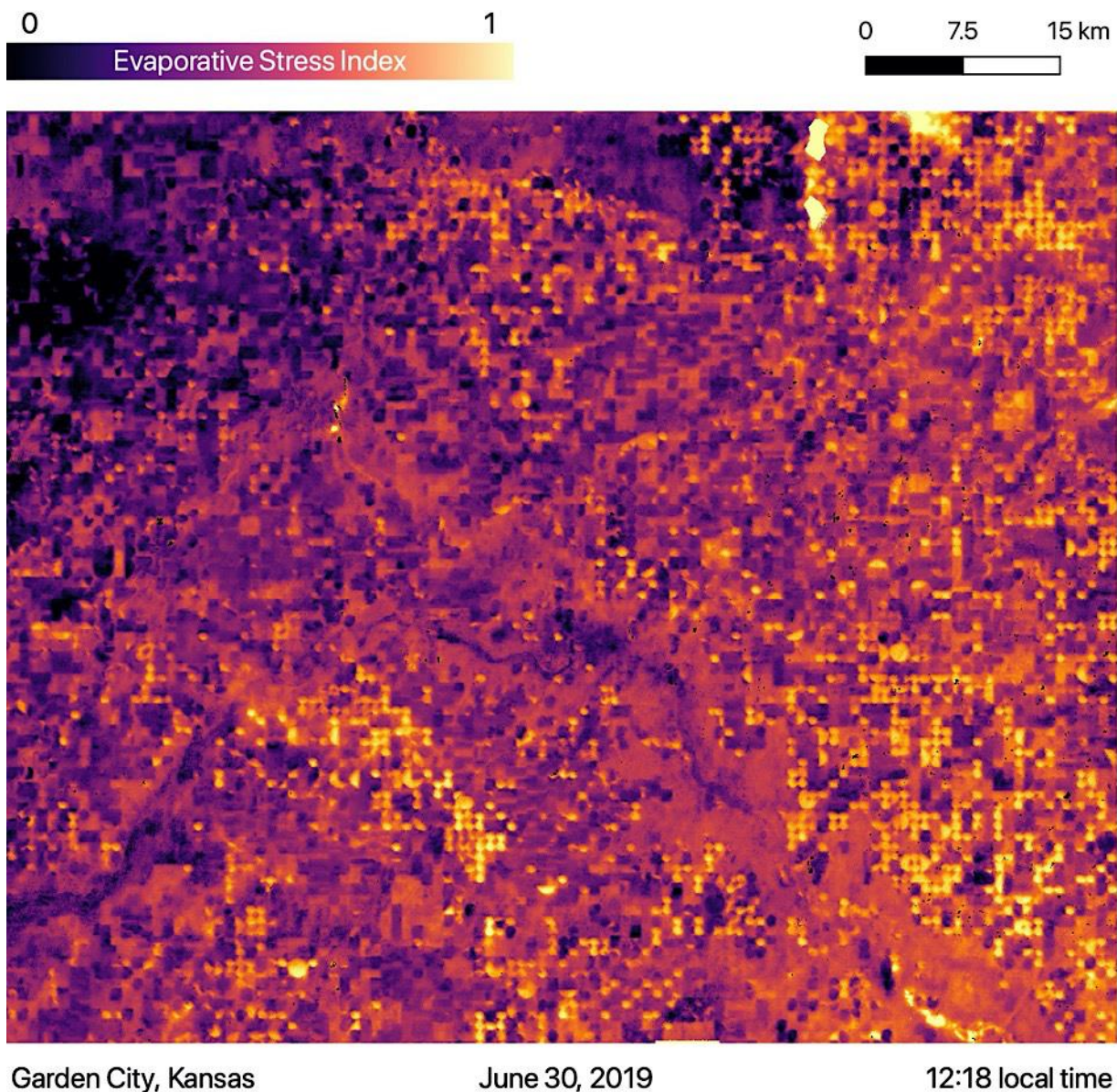


Figure 1. Example ECOSTRESS L3 Evaporative Stress Index (ESI) scene produced by DisALEXI-JPL over Garden City Kansas, acquired on June 30, 2019.

Data inputs to the ECOSTRESS L2 algorithm are listed in Table 2. Baseline ALEXI daily ET fluxes are produced at 4km resolution over CONUS using hourly morning LST retrievals from the East and West Geostationary Operational Environmental Satellites covering CONUS. Primary high resolution remote sensing inputs to DisALEXI-JPL are LST, leaf area index (LAI; used in the soil/canopy partitioning) and surface albedo (used to compute net radiation). For the L4 ESI product, LST is obtained from the L2 LST&E product, while albedo and LAI are computed from Landsat spectral reflectance (SR) data. Gridded meteorological inputs (solar radiation, wind speed, vapor pressure, atmospheric pressure and air temperature) are obtained from the Climate Forecast System Reanalysis (CFRS) dataset at native resolution of 0.25 degrees (Saha, 2010).

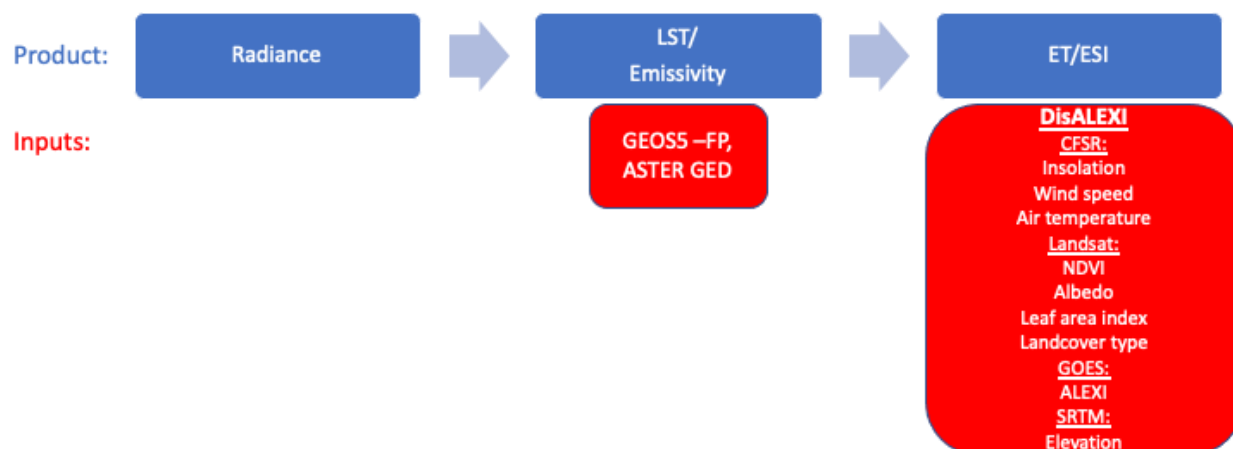


Figure 2. Conceptual diagram describing computation of L4 (ECO4ESIALEXI) evaporative stress index along with required inputs.

Table 2: ECOSTRESS input products and ancillary data required to produce the DisALEXI-JPL L3 ET and L4 ESI products.

Ancillary Data Set	Long Name	Data Used
ECOSTRESS_L2	ECOSTRESS Level-2 land-surface temperature and emissivity	Land-surface temperature
ECOSTRESS_L1B_GEO	Geolocation	Land/ocean mask Elevation Sensor and solar zenith angles Latitude, Longitude
Landsat Surface Reflectance product	Landsat Surface Reflectances, Collection 1 (EROS)	Multi-band surface reflectance
MCD15A3H	MODIS/Terra+Aqua Leaf Area Index/FPAR 4-Day L4 Global 500 m SIN Grid V006	Leaf Area Index
CFSR	Climate Forecast System Reanalysis	Air temperature, wind speed, mixing ratio, atmospheric pressure
NLCD	National Land Cover Dataset	Landcover classification

## 2.2 Scientific Data Sets (SDS)

The ECOSTRESS Level-4 DisALEXI-JPL ESI product contains 3 scientific data sets (SDSs): ESI<sub>daily</sub>, ESI<sub>dailyUncertainty</sub>, and QualityFlag. All SDS data are output ECOSTRESS native swath resolution. The ESI<sub>dailyUncertainty</sub> data reflect the uncertainty ESI associated with the error reported for the L2 ECOSTRESS LST inputs (LST\_Err). Details of each SDS including data type and units are shown in Table 3.

Table 3. The Scientific Data Sets (SDS) in the ECOSTRESS L4 ESI product.

Field Name	Type	Unit	Field Data
<b>GROUP</b>	<b>EVAPORATIVE STRESS INDEX ALEXI</b>		
ESI <sub>daily</sub>	Float	mm/day	
ESI <sub>dailyUncertainty</sub>	Float	mm/day	
QualityFlag	UInt8		

## 2.3 Attributes

Archived with the SDS are attributes (metadata) describing characteristics of the data. Contents of these attributes were determined and written during generation of the product at JPL by the Process Control System (PCS) and are used in archiving and populating the database at the LPDAAC to support user services. They are stored as very long character strings in parameter value language (PVL) format. Descriptions of the attributes are given here to assist the user in understanding them. ECOSTRESS products consist of a set of standard metadata (Table 4) and product-specific metadata (Table 5). The product specific metadata in Table 5 give details on ancillary data sets and average ESI uncertainty values for the entire scene.

Table 4. Standard product metadata included in all ECOSTRESS products.

Name	Type	Size	Example
<b>Group</b>	<b>StandardMetadata</b>		
AncillaryInputPointer	String	variable	Group name of ancillary file list
AutomaticQualityFlag	String	variable	PASS/FAIL (of product data)
BuildID	String	variable	
CampaignShortName	String	variable	Primary
CollectionLabel	String	variable	
DataFormatType	String	variable	NCSAHDF5
DayNightFlag	String	variable	
EastBoundingCoordinate	LongFloat	8	
HDFVersionID	String	variable	1.8.16
ImageLines	Int32	4	5400
ImageLineSpacing	Float32	4	70
ImagePixels	Int32	4	5632
ImagePixelSpacing	Float32	4	70
InputPointer	String	variable	
InstrumentShortName	String	variable	ECOSTRESS

LocalGranuleID	String	variable	
LongName	String	variable	ECOSTRESS
NorthBoundingCoordinate	LongFloat	8	
PGEName	String	variable	L4_ESI_ALEXI
PGEVersion	String	variable	
PlatformLongName	String	variable	ISS
PlatformShortName	String	variable	ISS
PlatformType	String	variable	Spacecraft
ProcessingLevelID	String	variable	4
ProcessingLevelDescription	String	variable	Level 4 Evaporative Stress Index ALEXI
ProducerAgency	String	variable	
ProducerInstitution	String	variable	JPL
ProductionDateTime	String	variable	
ProductionLocation	String	variable	
RangeBeginningDate	String	variable	
RangeBeginningTime	String	variable	
RangeEndingDate	String	variable	
RangeEndingTime	String	variable	
SceneID	String	variable	
ShortName	String	variable	L4_ALEXI
SISName	String	variable	
SISVersion	String	variable	Final
SouthBoundingCoordinate	LongFloat	8	
StartOrbitNumber	String	variable	
StopOrbitNumber	String	variable	
WestBoundingCoordinate	LongFloat	8	

Table 5. Product specific metadata for the ECOSTRESS L4 ESI product.

<b>Name</b>	<b>Type</b>	<b>Size</b>	<b>Example</b>
<b>Group</b>	<b>L4_ESI_ALEXI Metadata</b>		
QualityBitFlag	String	255	01011011011
AvgESIUncertainty	LongFloat	8	
AncillaryFiles	Int	4	100
AncillaryFileAirTemperature	String	255	CFSR_FILENAME_DATE
AncillaryFileALEXIETd	String	255	EDAY_V7NC_CFSRINSOL_2018200.dat
AncillaryFileBadMask	String	255	
AncillaryFileInsolation	String	255	CFSR_FILENAME_DATE
AncillaryFileLandcover	String	255	NLCD_FILENAME
AncillaryFileLST	String	255	LSTE_FILENAME
AncillaryFileMixingRatio	String	255	CFSR_FILENAME_DATE
AncillaryFilePressure	String	255	CFSR_FILENAME_DATE
AncillaryFileSurfaceReflectance	String	255	LANDSAT_TARFILE_NAME
AncillaryFileSurfReflectanceFill	String	255	
AncillaryFileWindSpeed	String	255	CFSR_FILENAME_DATE
BandSpecification	Float32	6	
Projection	String	255	ECOSTRESS

Geotransform	String	255	
OGC Well Known Text	String	variable	Blank if Projection=ECOSTRESS If Projection=UTM, EG: {PROJCS["UTM_Zone_11N",GEOGCS["GCS_WGS_1984",DATUM["D_WGS_1984",SPHEROID["WGS_1984",6378137.0,298.257223563]],PRIME["Greenwich",0.0],UNIT["Degree",0.0174532925199433]],PROJECTION["Transverse_Mercator"],PARAMETER["False_Easting",500000.0],PARAMETER["False_Northing",0.0],PARAMETER["Central_Meridian",-117.0],PARAMETER["Scale_Factor",0.9996],PARAMETER["Latitude_Of_Origin",0.0],UNIT["Meter",1.0]]}

## 2.4 Quality Flag

Indicators of data quality are described in the quality flag SDS generated during production. The QualityFlag SDS provides information on regarding cause of missing data in the L4 DisALEXI-JPL ESI product. A successful ESI retrieval for a given pixel requires 1) good quality clear-sky L2 LST data are available, 2) good quality surface reflectance data are available from bracketing Landsat overpass date, 3) an ALEXI retrieval is available for the 4-km ALEXI grid cell encompassing the 70-m target pixel; and 4) the pixel is designated as land in the NLCD (retrievals for open water bodies are not conducted). These conditions are tracked in the QualityFlag SDS at the pixel level. The QualityFlag SDS unsigned 8-bit data are stored as bit flags in the SDS. This QC information can be extracted by reading the bits in the 8-bit unsigned integer.

Table 6. Bit flags defined in the QC SDS in the L4 ALEXI ESI product. (Note: Bit 0 is the least significant bit).

Bit Field	Long Name	Result
0	Pixel computed	0 = yes 1 = no
1	Good quality LSTE available	0 = yes 1 = no
2	Good quality Surface Reflectance data available	0 = yes 1 = no
3	ALEXI data available	0 = yes 1 = no
4	Other (land pixel, etc.)	0 = yes

## Acknowledgements

We thank Martha Anderson, Munish Sikka, Erin Wong, Gregory Halverson, Chris Hain, Feng Gao, Bill Kustas, John Norman, Carmelo Cammalleri, Peijuan Wang, Kate Semmens, Yun Yang, Wayne Dulaney, Liang Sun, and Yang Yang for contributions to the algorithm development described in this User Guide.

## 3 References

- Anderson, M.C., Norman, J.M., Diak, G.R., Kustas, W.P., & Mecikalski, J.R. (1997). A two-source time-integrated model for estimating surface fluxes using thermal infrared remote sensing. *Remote Sens. Environ.*, 60, 195-216
- Anderson, M.C., W. P. Kustas, and J. M. Norman, (2003). Upscaling and downscaling—A regional view of the soil–plant–atmosphere continuum. *Agron. J.*, 95, 1408–1423.
- Anderson, M.C., Norman, J.M., Mecikalski, J.R., Torn, R.D., Kustas, W.P., & Basara, J.B. (2004). A multi-scale remote sensing model for disaggregating regional fluxes to micrometeorological scales. *J. Hydrometeor.*, 5, 343-363
- Anderson, M.C., Norman, J.M., Mecikalski, J.R., Otkin, J.A., & Kustas, W.P. (2007a). A climatological study of evapotranspiration and moisture stress across the continental U.S. based on thermal remote sensing: I. Model formulation. *J. Geophys. Res.*, 112, D10117, doi:10.1029/2006JD007506
- Anderson, M.C., Norman, J.M., Mecikalski, J.R., Otkin, J.A., Kustas, W.P. (2007b). A climatological study of evapotranspiration and moisture stress across the continental U.S. based on thermal remote sensing. II. Surface moisture climatology. *Journal of Geophysical Research*. 112, D11112. <http://dx.doi.org/10.1029/2006JD007507>.
- Anderson, M.C., Kustas, W.P., Norman, J., Hain, C., Mecikalski, J., Schultz, L., Gonzalez-Dugo, M.P., Cammalleri, C., D'Urso, G., Pimstein, A., Gao, F. (2011). Mapping daily evapotranspiration at field to global scales using geostationary and polar orbiting satellite imagery. *Hydrology and Earth System Sciences*. 15:223-239.
- Anderson, M.C., Gao, F.N., Hain, C., Kustas, W.P. (2013). Mapping daily evapotranspiration at field scales over rainfed and irrigated agricultural areas using remote sensing data fusion. *Agricultural and Forest Meteorology*. 186:1-11.
- Anderson, M.C., Zolin, C., Hain, C., Semmens, K.A., Yilmaz, M., Gao, F.N. (2015). Comparison of satellite-derived LAI and precipitation anomalies over Brazil with a



- 
- thermal infrared-based Evaporative Stress Index for 2003-2013. *Journal of Hydrology*. doi: 10.1016/j.jhydrol.2015.1001.1005.
- Anderson, M.C., Hain, C., Jurecka, F., Trnka, M., Hlavinka, D., Dulaney, W.P., Otkin, J., Johnson, D., Gao, F.N. (2016a). An energy balance approach for mapping crop waterstress and yield impacts over the Czech Republic. *Climate Research*. 70:215-230.
- Anderson, M.C., Zolin, C., Sentelhas, P., Hain, C., Semmens, K., Yilmaz, M., Gao, F.N., Otkin, J., Tetrault, R. (2016b). Assessing correlations of satellite-derived evapotranspiration, precipitation and leaf area index anomalies with yields of major Brazilian crops. *Remote Sensing of Environment*. 174:82-99.
- Anderson, M.C., Gao, F., Knipper, K., Hain, C., Dulaney, W., Baldocchi, D.D., Eichelmann, E., Hemes, K.S., Yang, Y., Medellín-Azuara, J., & Kustas, W.P. (2018). Field-scale assessment of land and water use change over the California Delta using remote sensing. *Remote Sens.*, 10, 889
- Cammalleri, C., Anderson, M.C., Gao, F., Hain, C.R., & Kustas, W.P. (2013). A data fusion approach for mapping daily evapotranspiration at field scale. *Water Resources Res.*, 49, 1-15, doi:10.1002/wrcr.20349
- Cammalleri, C., Anderson, M.C., Gao, F.H., C.R., & Kustas, W.P. (2014). Mapping daily evapotranspiration at field scales over rainfed and irrigated agricultural areas using remote sensing data fusion. *Agric. For. Meteorol.*, 186, 1-11
- Gao, F., Kustas, W.P., Anderson, M.C., (2012a). A data mining approach for sharpening thermal satellite imagery over land. *Remote Sens.* 4, 3287–3319. <http://dx.doi.org/10.3390/rs4113287>.
- Gao, F., Anderson, M.C., Kustas, W.P., Wang, Y., (2012b). Simple method for retrieving leaf area index from Landsat using MODIS leaf area index products as reference. *J. Appl. Remote. Sens.* 6, 63554. <http://dx.doi.org/10.1117/1.JRS.6.063554>.
- Kustas, W. P., and J. M. Norman (1999), Evaluation of soil and vegetation heat flux predictions using a simple two-source model with radiometric temperatures for partial canopy cover, *Agric. For. Meteorol.*, 94, 13– 25.
- Norman, J. M., Kustas, W. P., & Humes, K. S. (1995). A two-source approach for estimating soil and vegetation energy fluxes from observations of directional radiometric surface temperature. *Agricultural and Forest Meteorology*, 77, 263-293.
- Norman, J.M., Anderson, M.C., Kustas, W.P., French, A.N., Mecikalski, J.R., Torn, R.D., Diak, G.R., Schmugge, T.J., & Tanner, B.C.W. (2003). Remote sensing of surface energy fluxes at 10<sup>1</sup>-m pixel resolutions. *Water Resour. Res.*, 39
- Saha, S., S. Moorthi, H. Pan, X. Wu, J. Wang, S. Nadiga, P. Tripp, R. Kistler, J. Woollen, D. Behringer, H. Liu, D. Stokes, R. Grumbine, G. Gayno, J. Wang, Y. Hou, H. Chuang, H.H. Juang, J. Sela, M. Iredell, R. Treadon, D. Kleist, P. Van Delst, D. Keyser, J. Derber, M. Ek, J. Meng, H. Wei, R. Yang, S. Lord, H. van den Dool, A. Kumar, W. Wang, C. Long, M. Chelliah, Y. Xue, B. Huang, J. Schemm, W. Ebisuzaki, R. Lin, P. Xie, M.

---

Chen, S. Zhou, W. Higgins, C. Zou, Q. Liu, Y. Chen, Y. Han, L. Cucurull, R.W. Reynolds, G. Rutledge, and M. Goldberg, 2010: The NCEP Climate Forecast System Reanalysis. *Bull. Amer. Meteor. Soc.*, 91, 1015–1058, <https://doi.org/10.1175/2010BAMS3001.1>